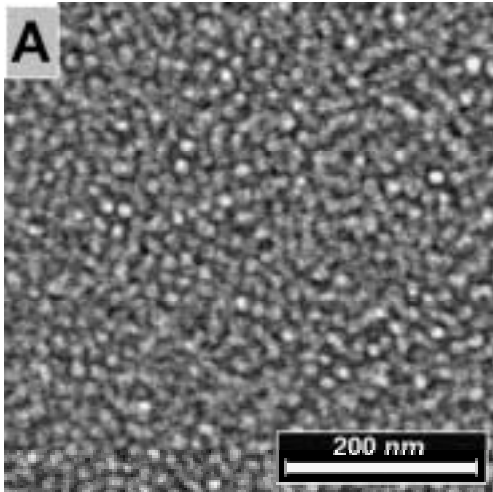


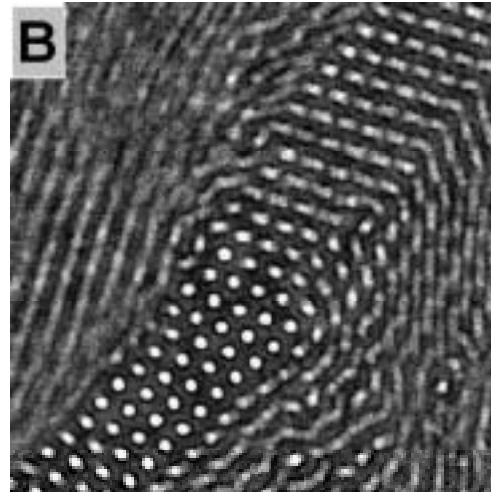
# Metal-containing inorganic-organic nanocomposites

A.C. Finnefrock, G.E.S. Toombes,  
R. Ulrich, U. Wiesner, S.M. Gruner

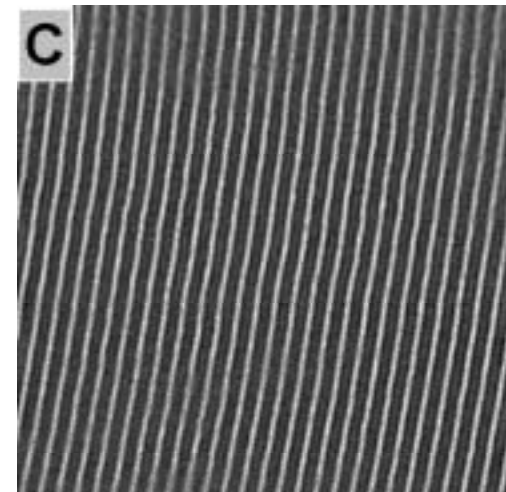
# Mesophases from block copolymers



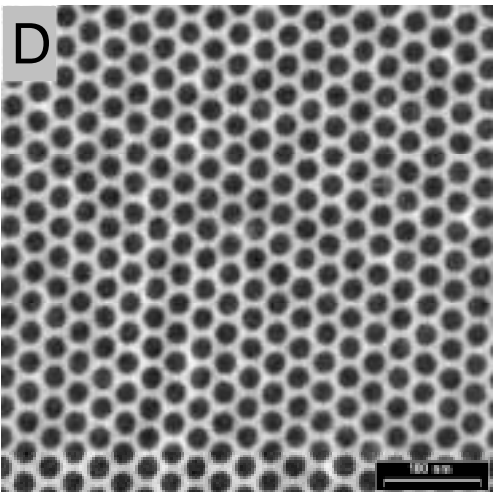
spheres



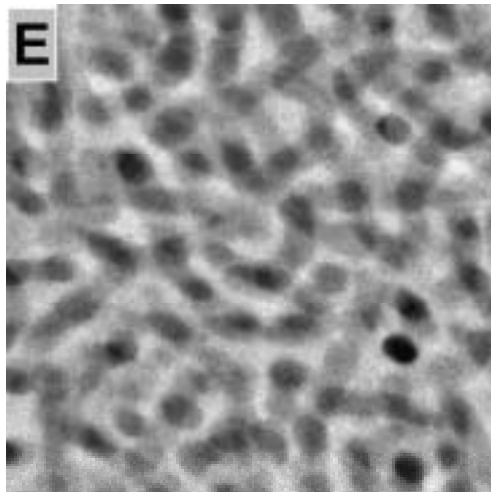
hexagonal



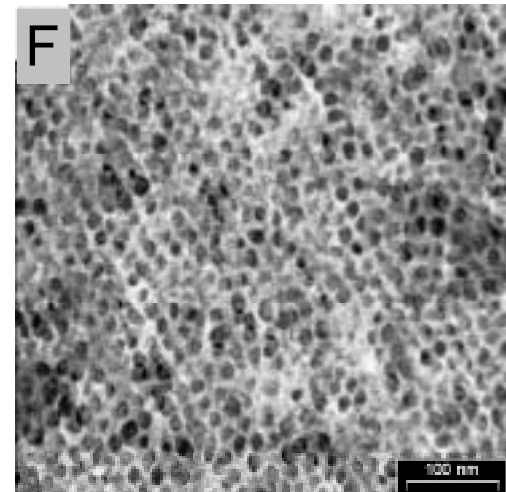
lamellar



inverse hexagonal

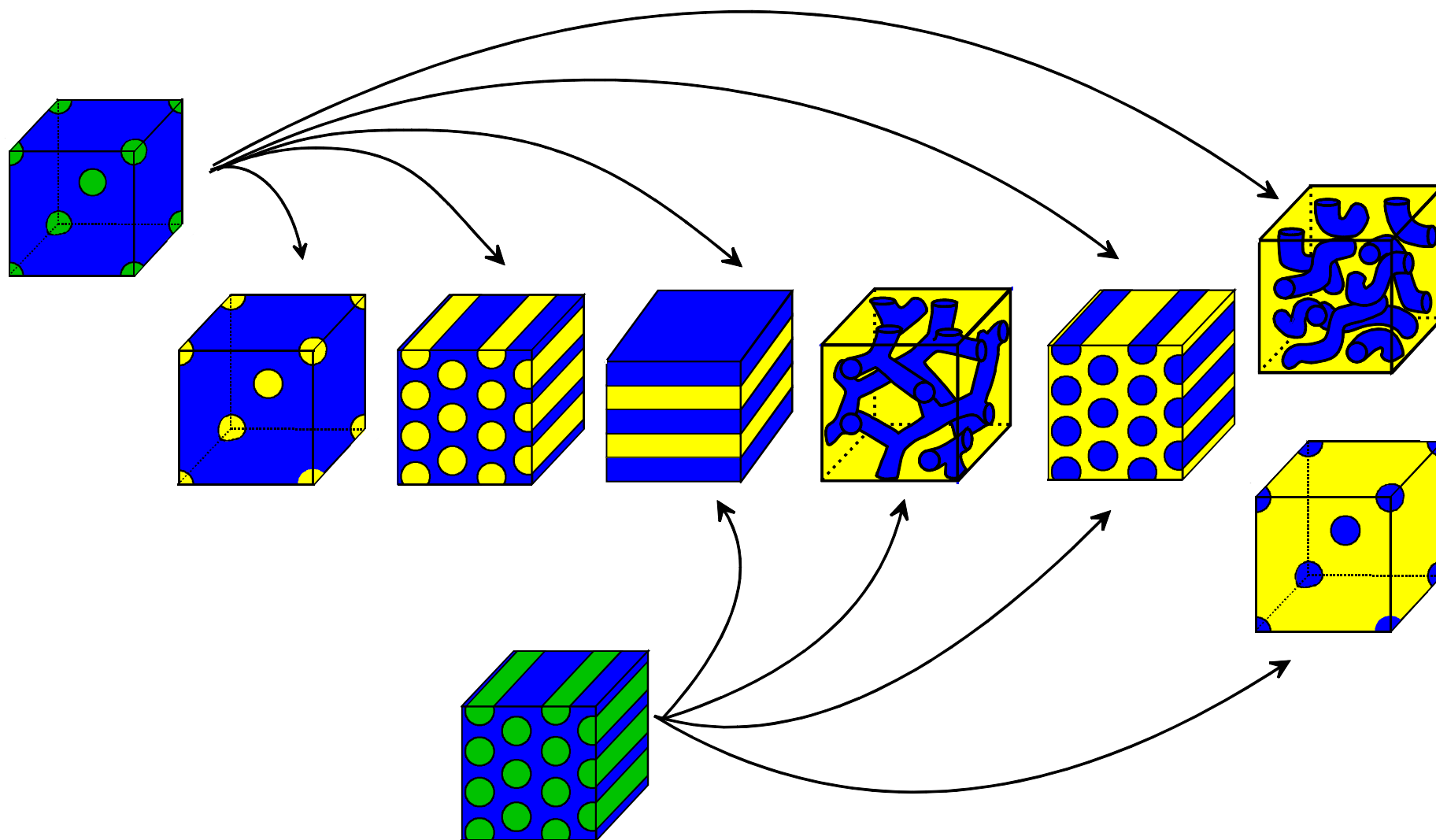


worm-like micelles



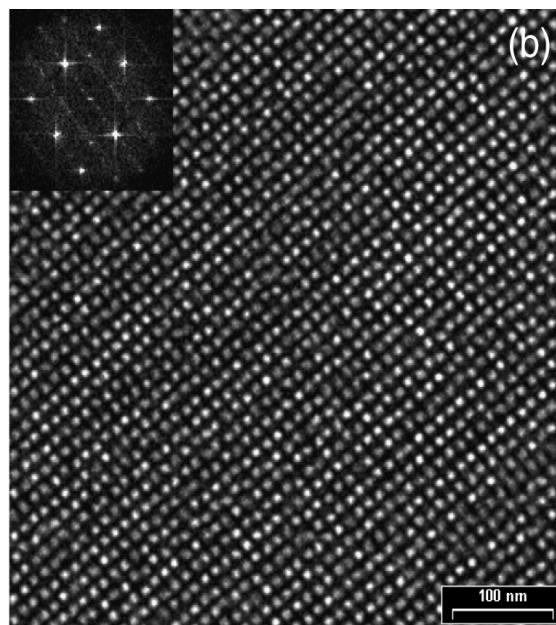
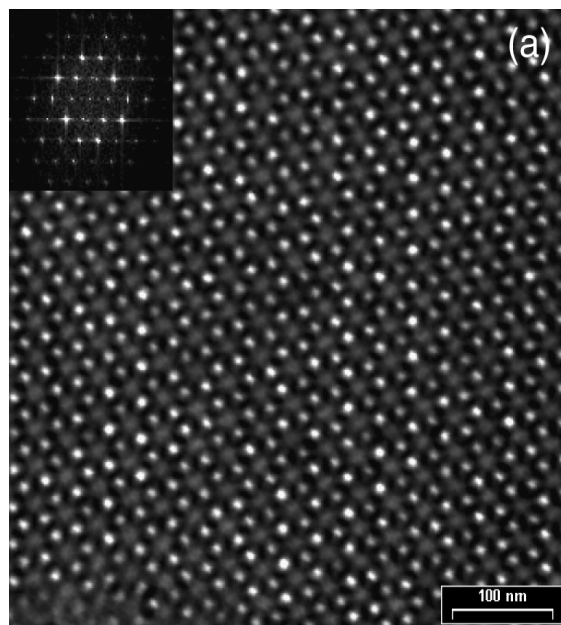
inverse spheres

# Synthesis of inorganic-organic hybrids

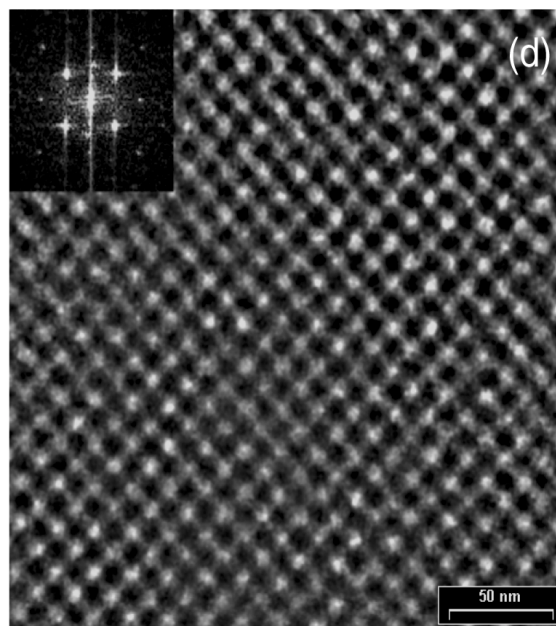
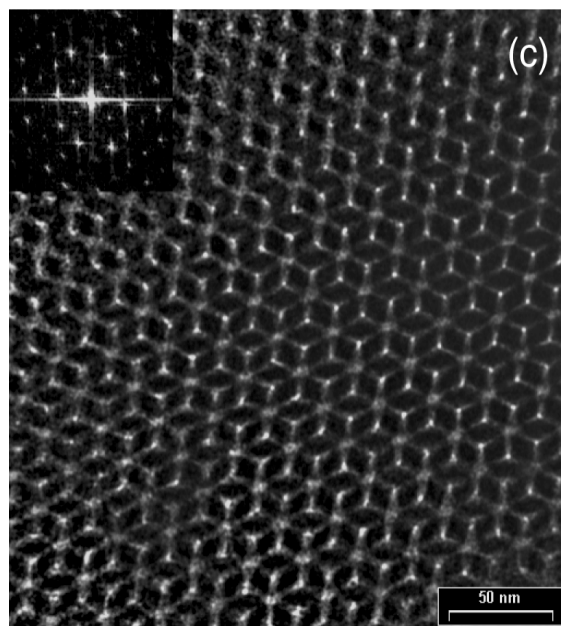


# TEM images

uncalcined



calcined

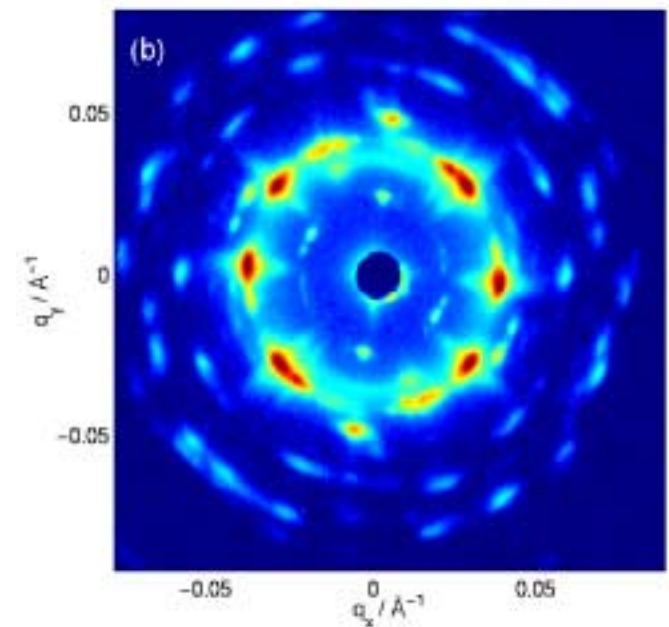
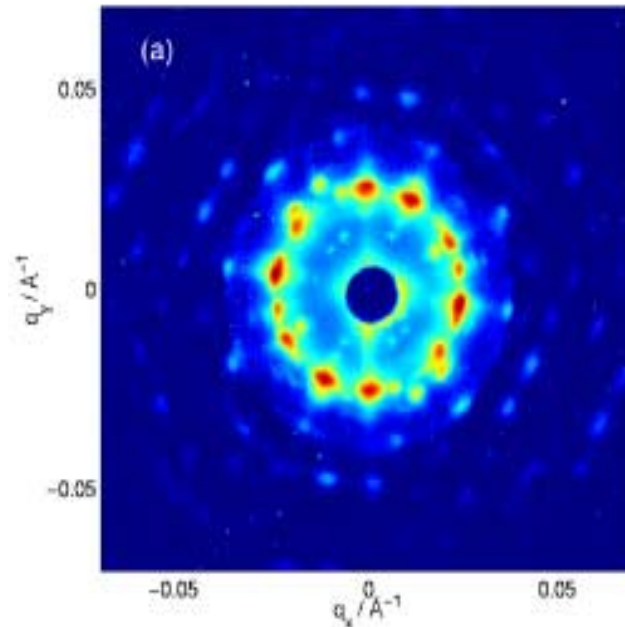


# Small angle x-ray scattering data

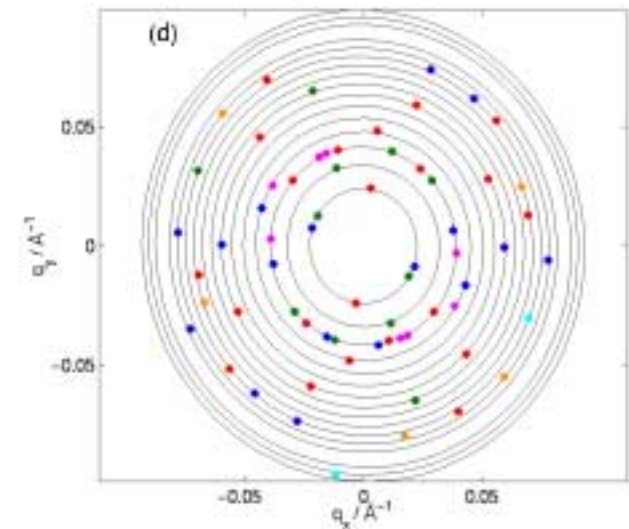
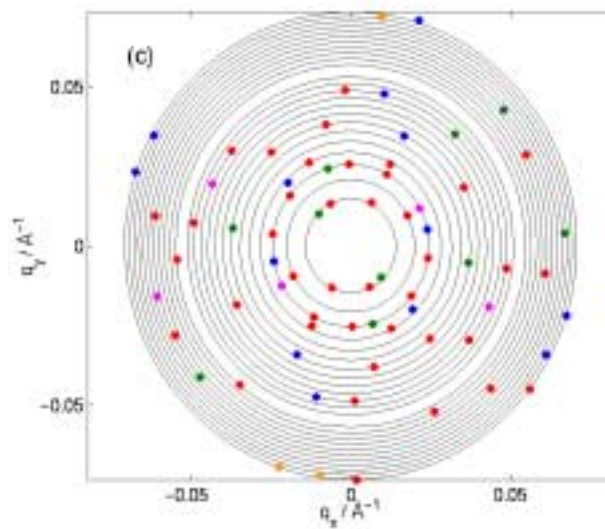
uncalcined

calcined

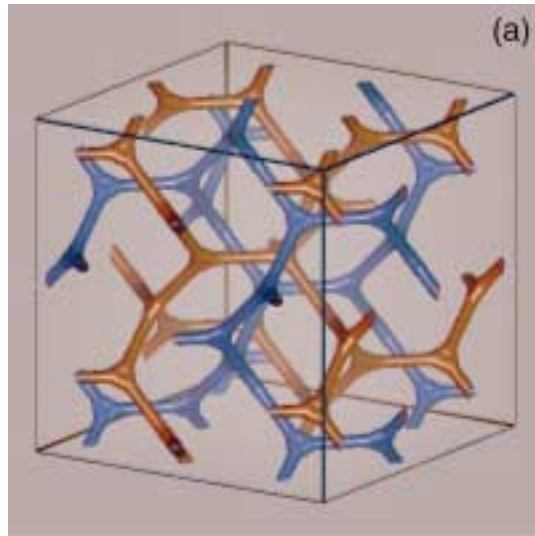
data



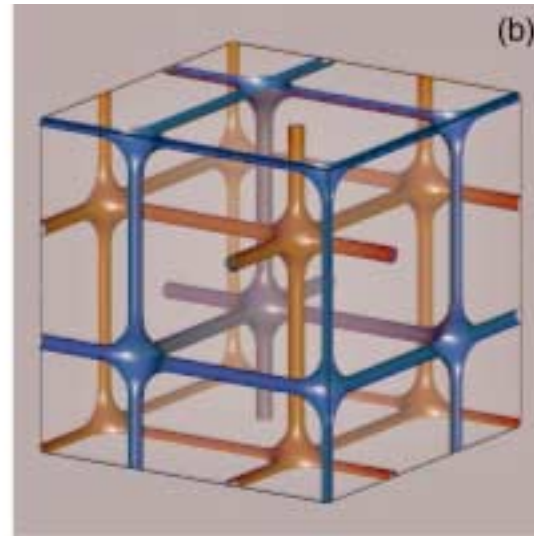
fits



# Real-space bicontinuous structures



gyroid  
(Ia3d)



plumber's nightmare  
(Im3m)

X-ray scattering can distinguish between these structures, as they belong to distinct space groups (symmetries).